

## ATTACHMENT C-6

# MAPS OF GROUND DEPOSITION - MEXT DATASETS

UNSCEAR 2013 Report, Annex A, Levels and effects of radiation exposure due to the nuclear accident after the 2011 great east-Japan earthquake and tsunami, Appendix C (Assessment of doses to the public)

### Contents

This attachment provides maps of deposition density on the ground for each radionuclide ( $^{137}\text{Cs}$ ,  $^{134}\text{Cs}$ ,  $^{131}\text{I}$ ,  $^{129\text{m}}\text{Te}$ ,  $^{110\text{m}}\text{Ag}$ ,  $^{90}\text{Sr}$ ,  $^{89}\text{Sr}$ ,  $^{239}\text{Pu}$  and  $^{238}\text{Pu}$ ) reported in the datasets of the Ministry of Education, Culture, Sports, Science and Technology (MEXT). The workbooks for these datasets are provided in attachments C-1 to C-5.

### Notes

The designations employed and the presentation of material in this publication do not imply the expression of any opinion whatsoever on the part of the Secretariat of the United Nations concerning the legal status of any country, territory, city or area, or of its authorities, or concerning the delimitation of its frontiers or boundaries.

© United Nations, December 2014. All rights reserved, worldwide.

This publication has not been formally edited.

Figure I. Deposition density of  $^{137}\text{Cs}$  on the ground —based on MEXT ground survey data—in Fukushima Prefecture and neighbouring prefectures

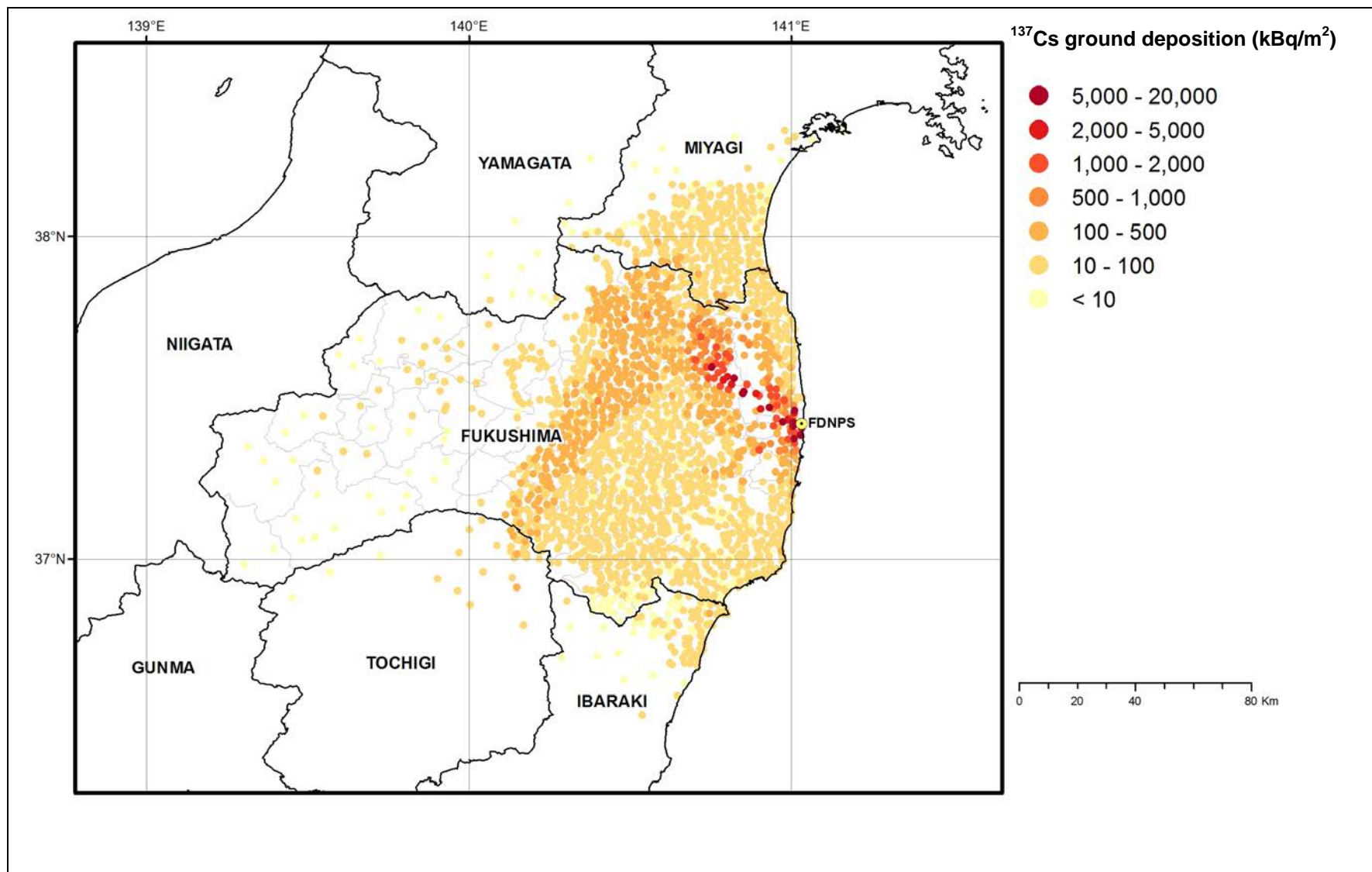


Figure II. Deposition density of  $^{134}\text{Cs}$  on the ground—based on MEXT ground survey data—in Fukushima Prefecture and neighbouring prefectures

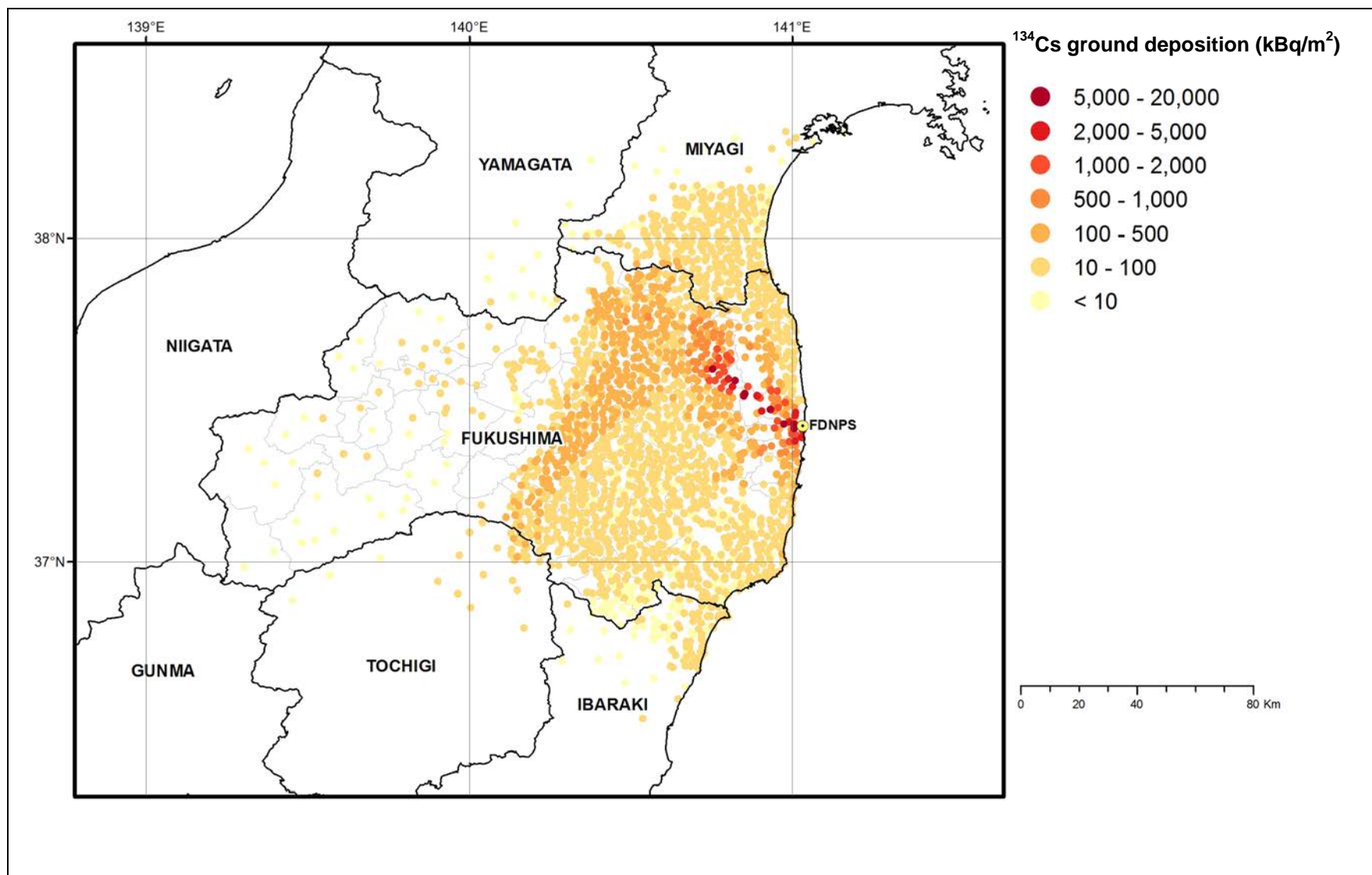


Figure III. Deposition density of  $^{131}\text{I}$  on the ground—based on MEXT ground survey data—in Fukushima Prefecture and neighbouring prefectures

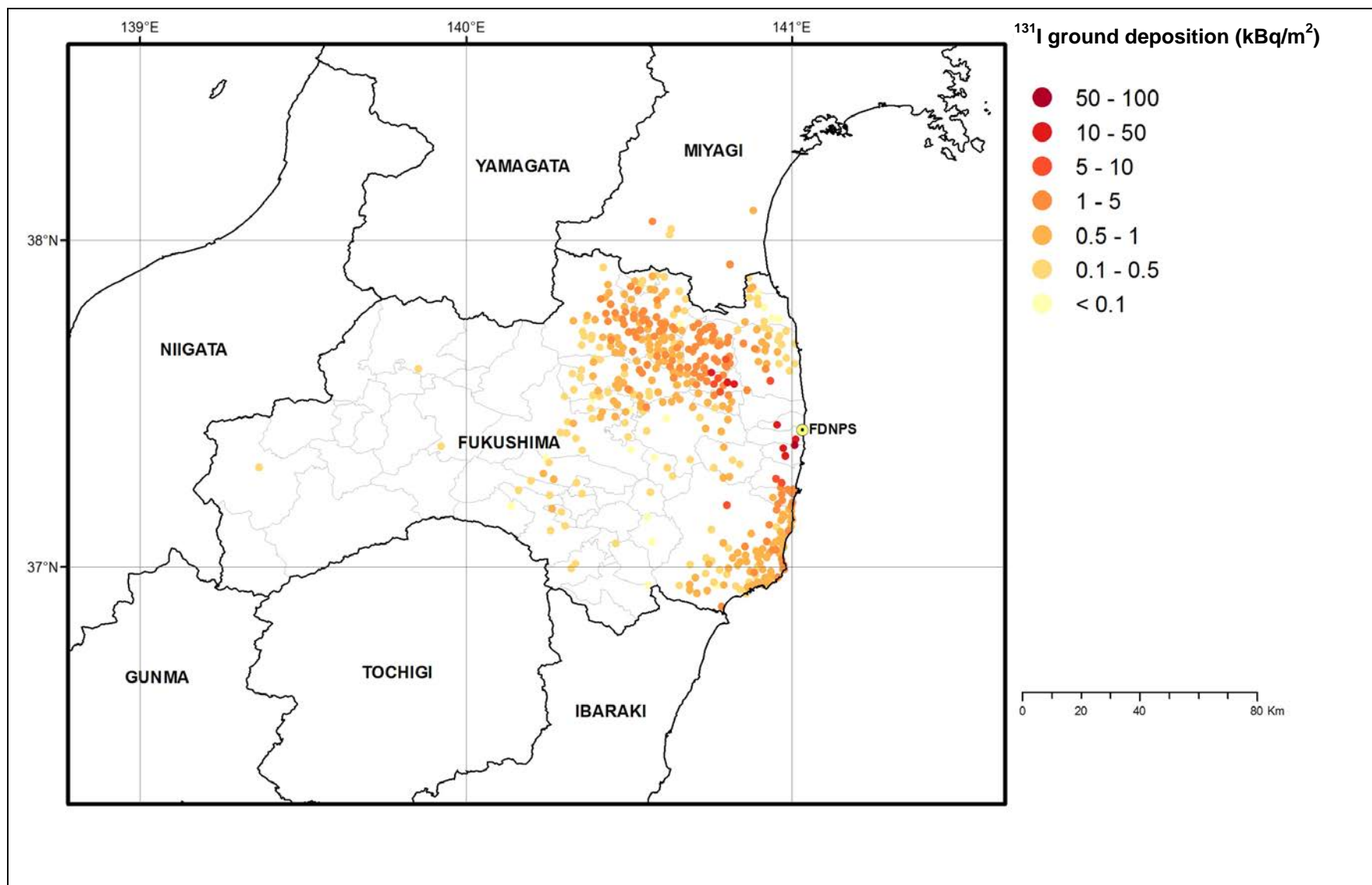


Figure IV. Deposition density of  $^{129m}\text{Te}$  on the ground—based on MEXT ground survey data—in Fukushima Prefecture and neighbouring prefectures

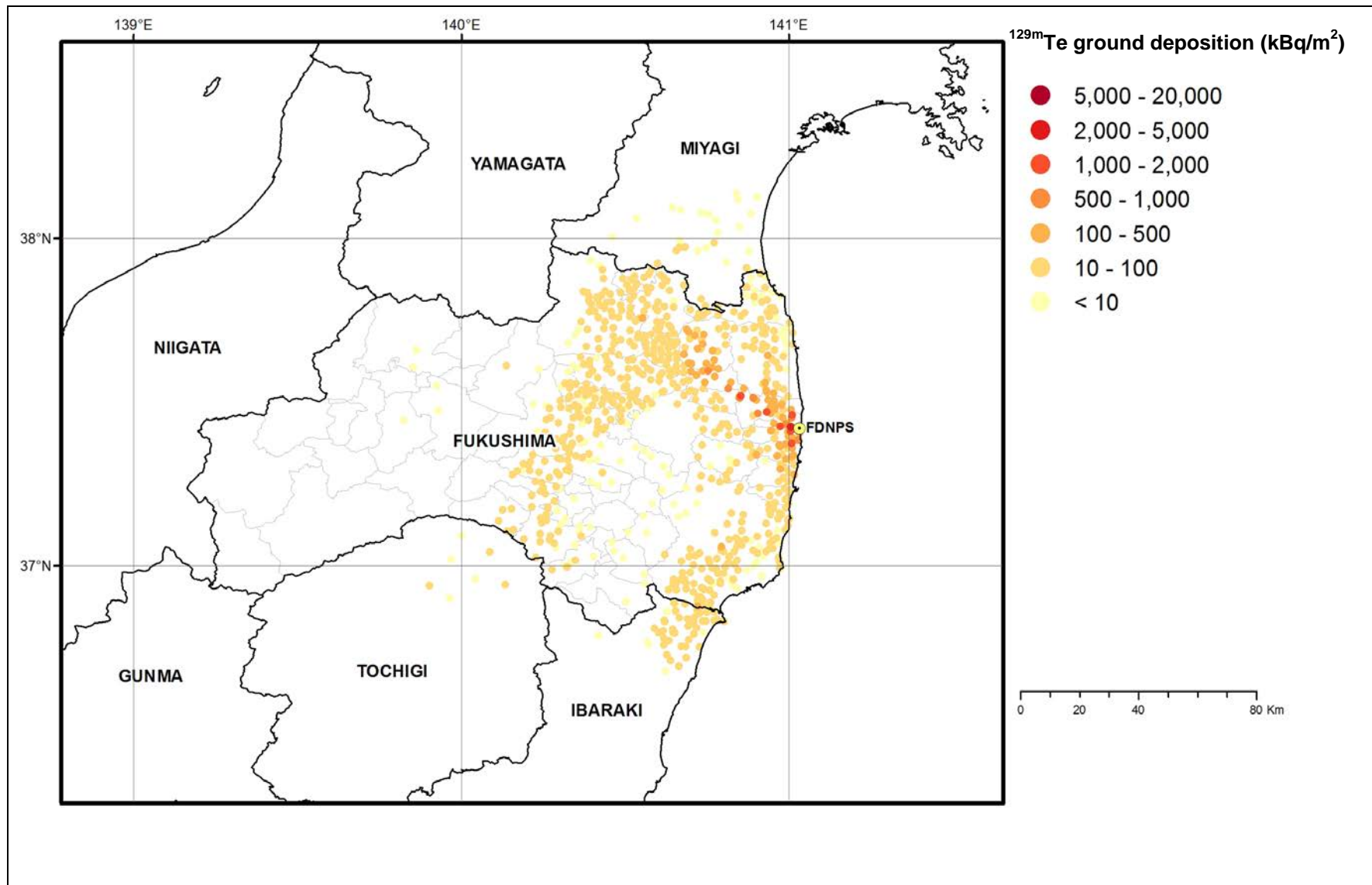


Figure V. Deposition density of  $^{110m}\text{Ag}$  on the ground—based on MEXT ground survey data—in Fukushima Prefecture and neighbouring prefectures

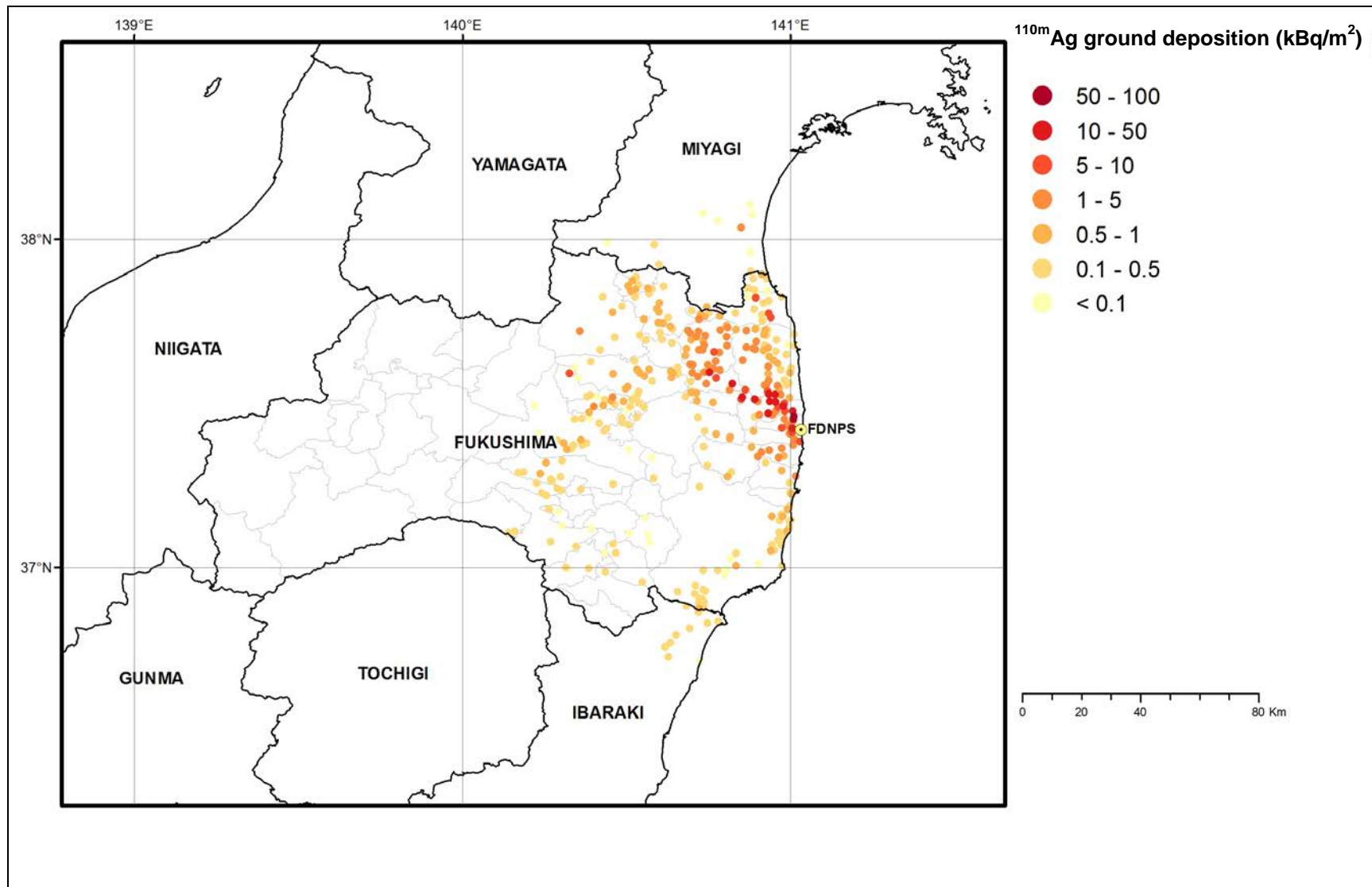


Figure VI. Deposition density of  $^{90}\text{Sr}$  on the ground—based on MEXT ground survey data—in Fukushima Prefecture and neighbouring prefectures

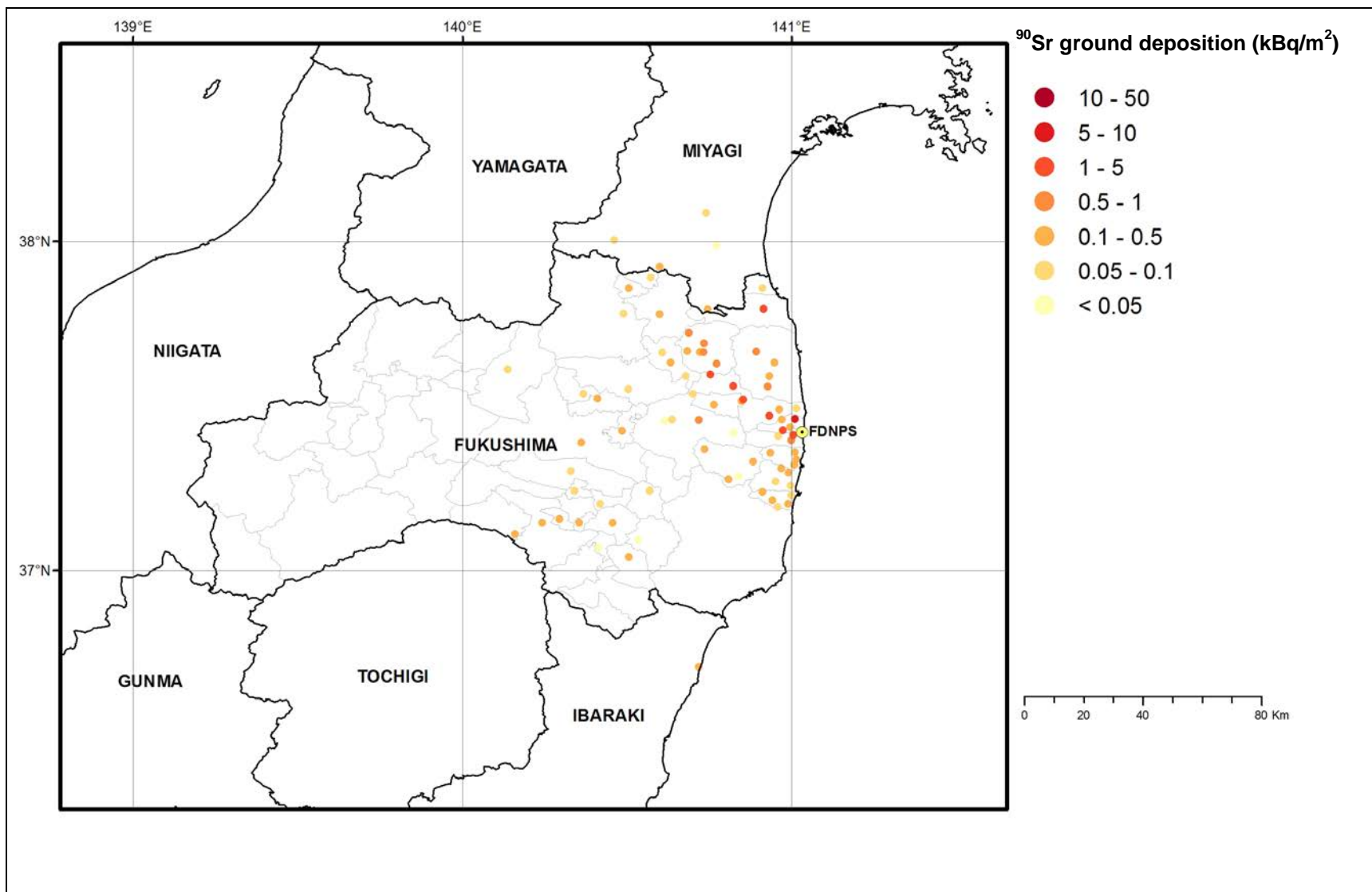


Figure VII. Deposition density of  $^{89}\text{Sr}$  on the ground—based on MEXT ground survey data—in Fukushima Prefecture and neighbouring prefectures

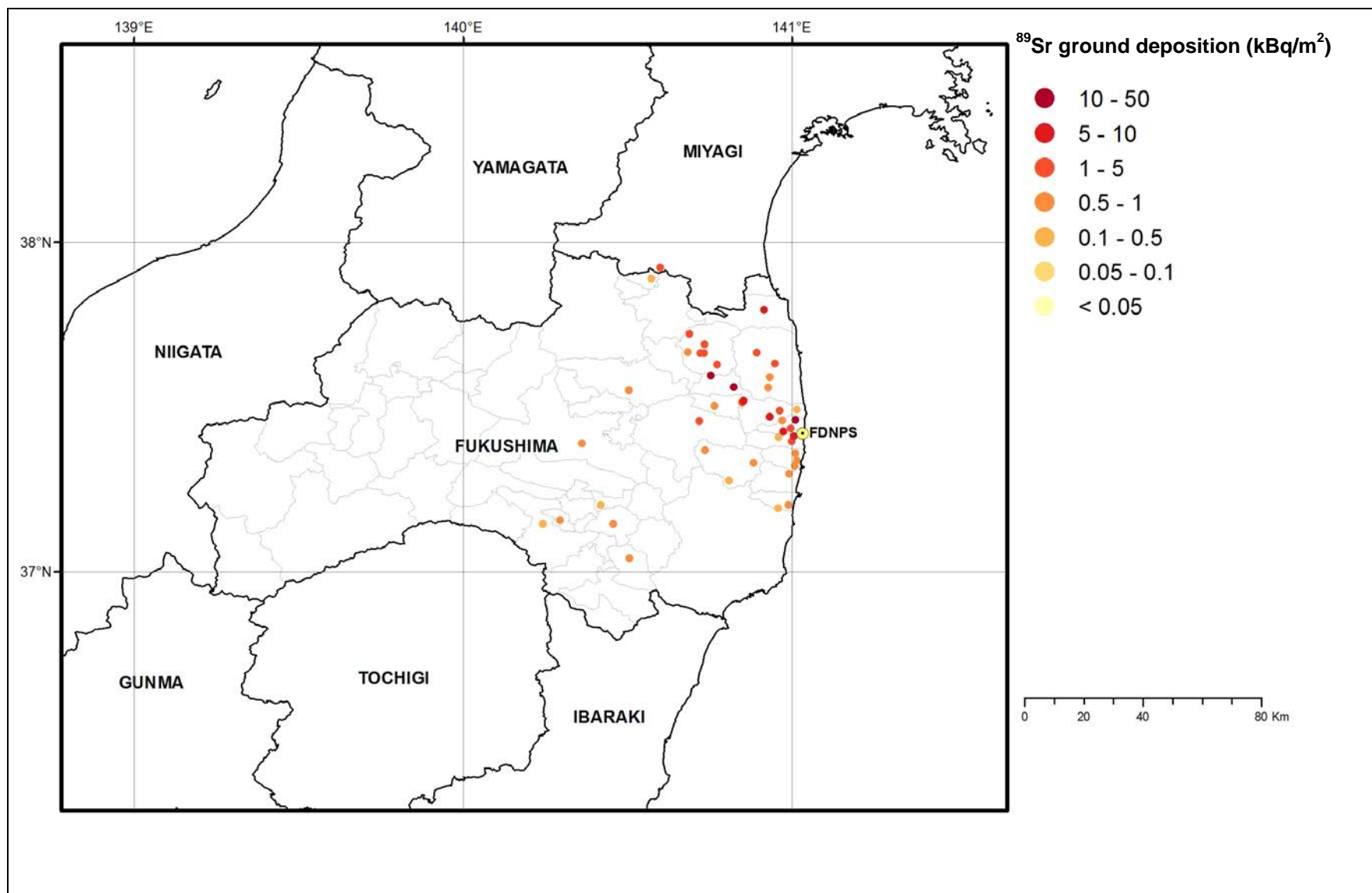




Figure VIII. Deposition density of  $^{239}\text{Pu}$  on the ground—based on MEXT ground survey data—in Fukushima Prefecture and neighbouring prefectures

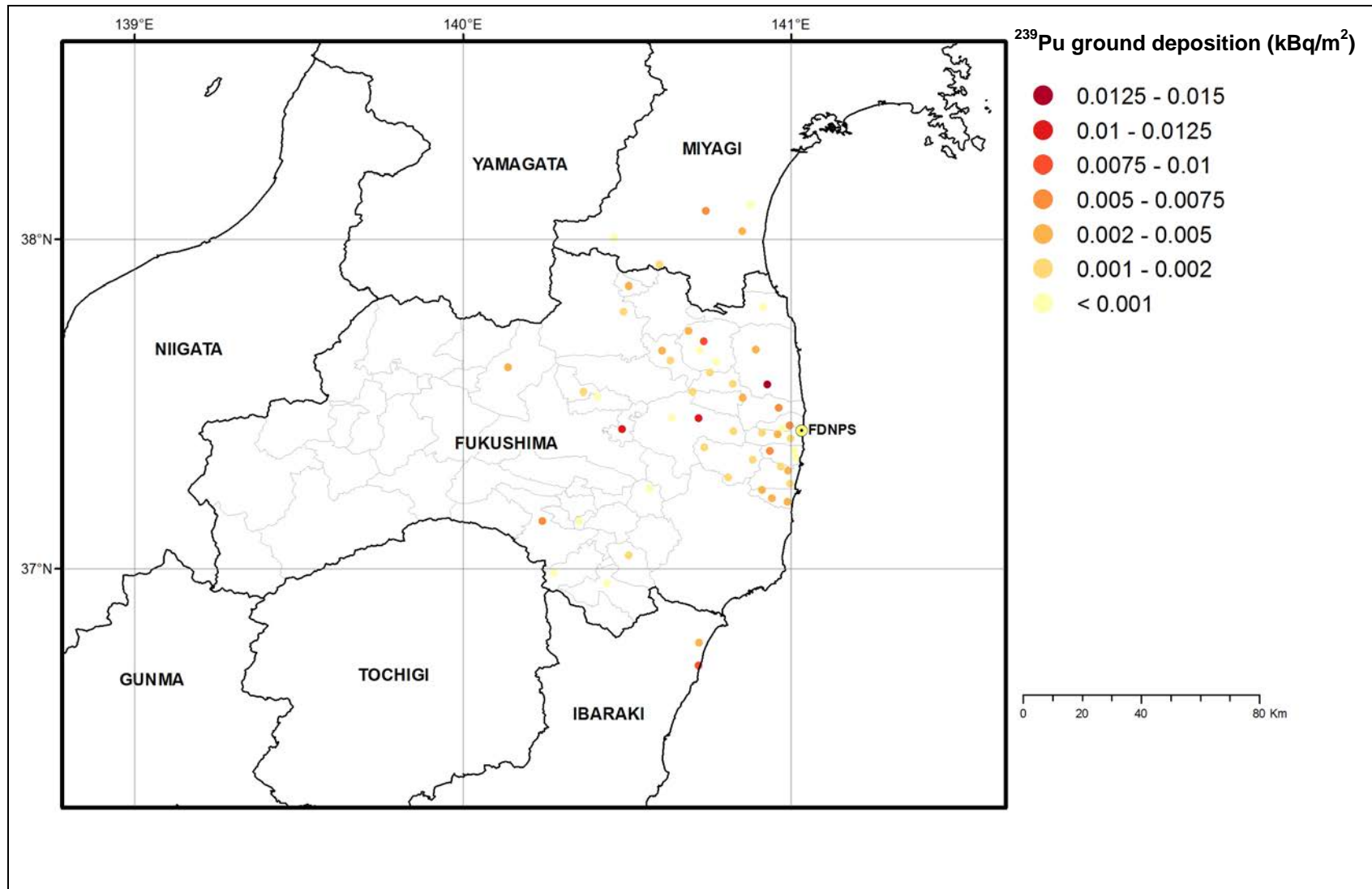


Figure IX. Deposition density of  $^{238}\text{Pu}$  on the ground—based on MEXT ground survey data—in Fukushima Prefecture and neighbouring prefectures

